

PROMPT EXPERIMENTS - SKIN TONES

Let's take a look at the various color words the AI understands for skin tones.
The following generations all used the same very simple core prompt:

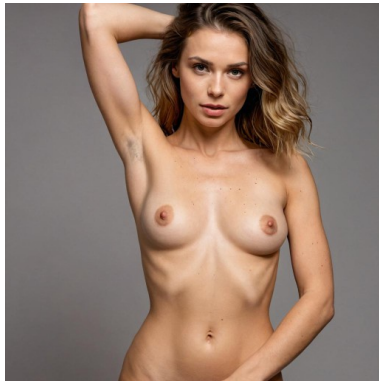
naked woman with (XXX skin)

KEY:

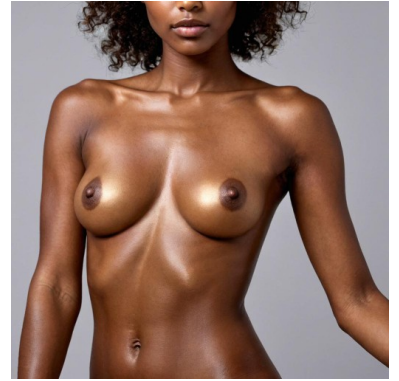
Green	SUCCESSFUL: all or near all as expected
Yellow	PARTLY SUCCESSFUL: not quite as expected
Red	FAILURE: not at all as expected

SKIN TONES

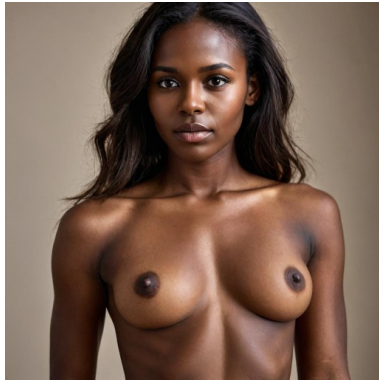
beige



bronze



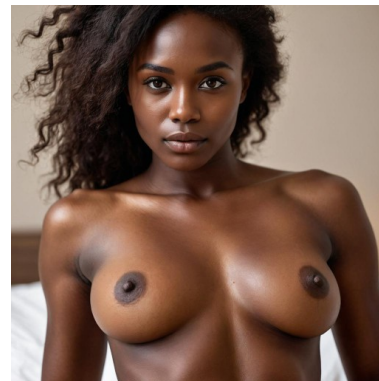
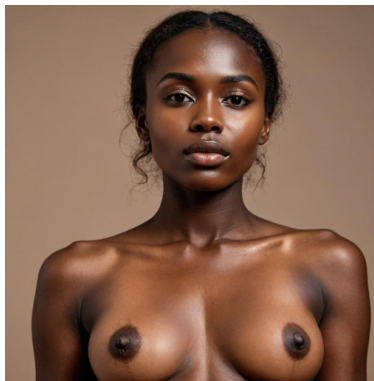
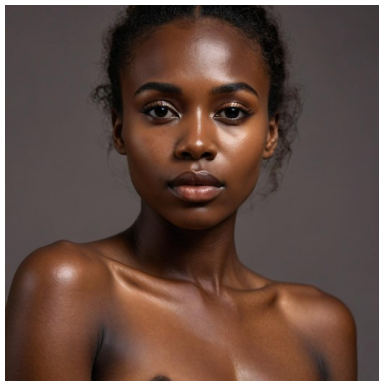
dark brown



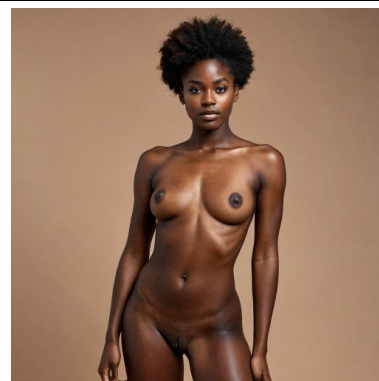
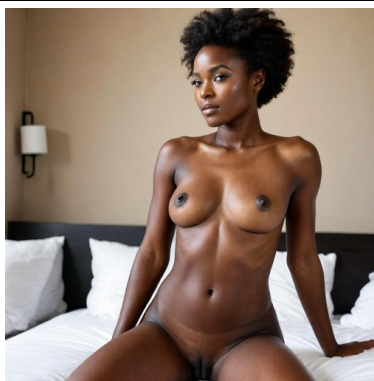
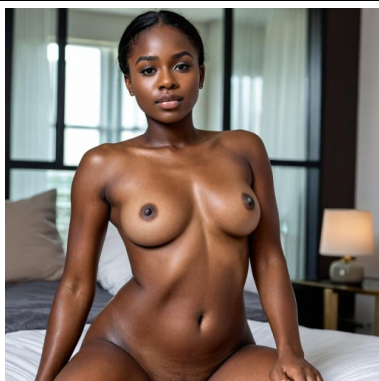
dark ebony



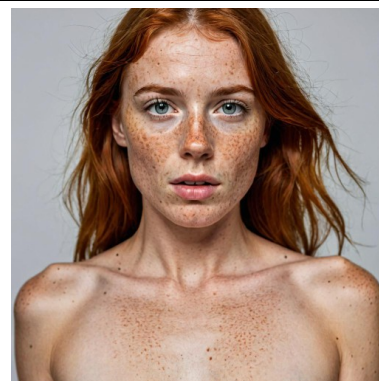
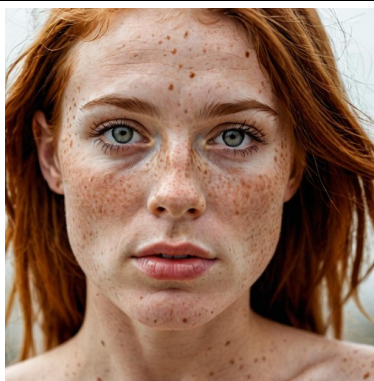
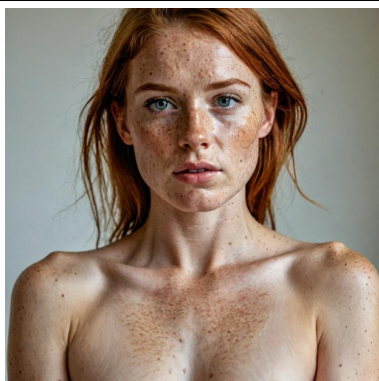
dark umber



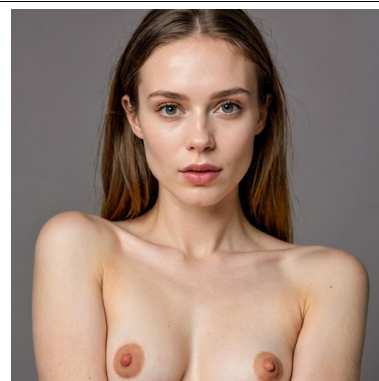
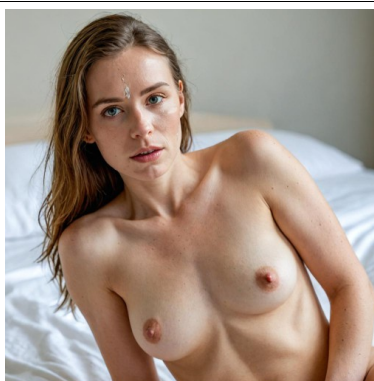
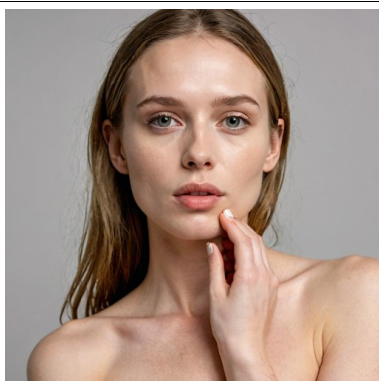
ebony



freckled



ivory



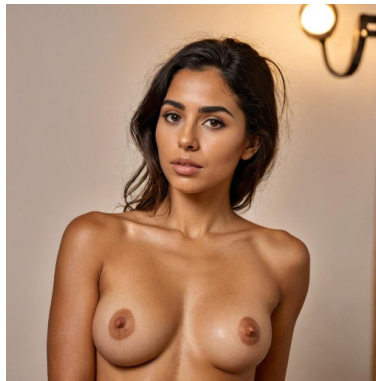
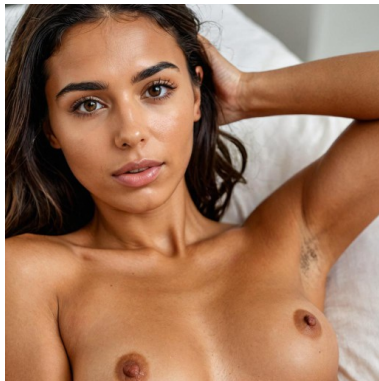
light brown



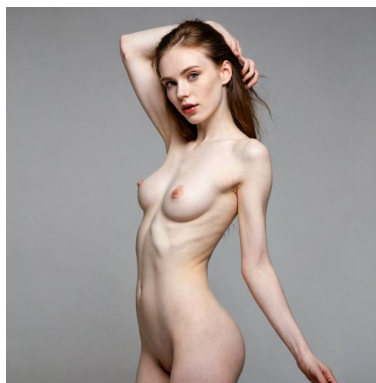
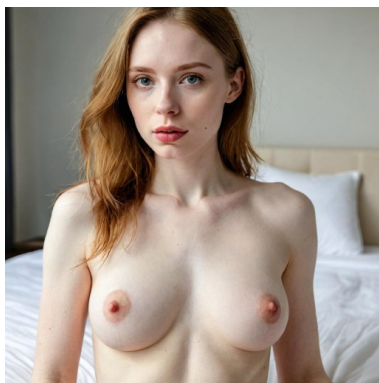
medium brown



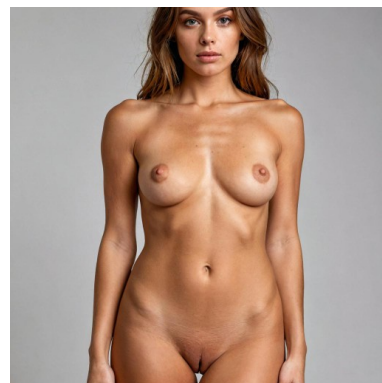
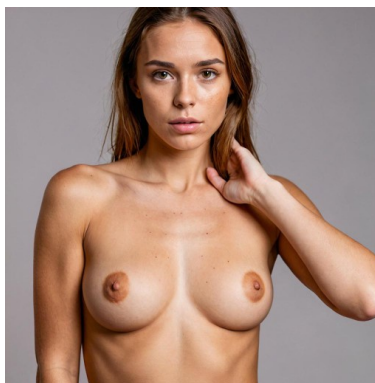
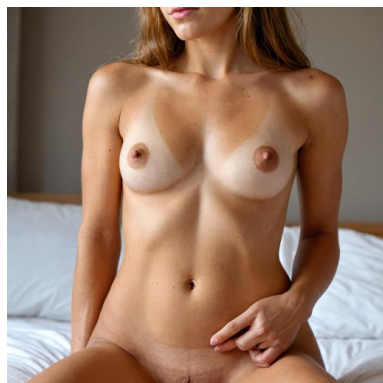
olive



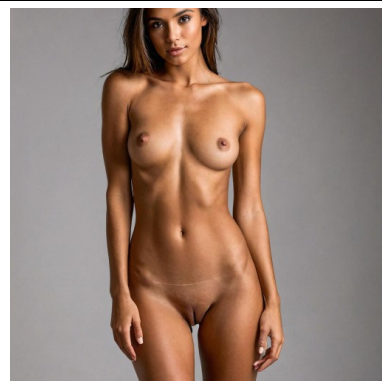
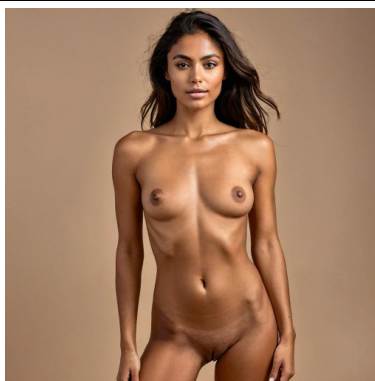
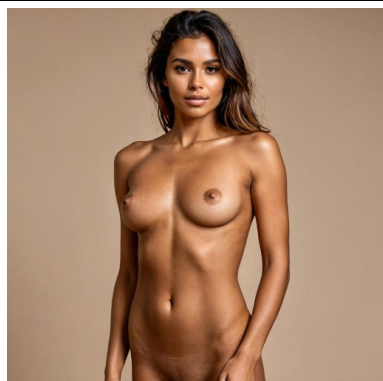
pale



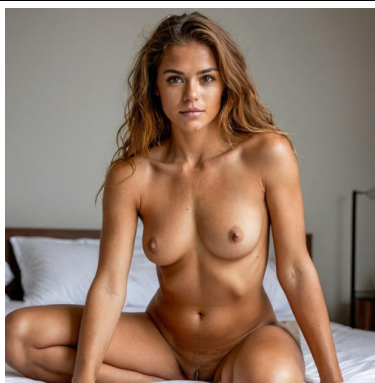
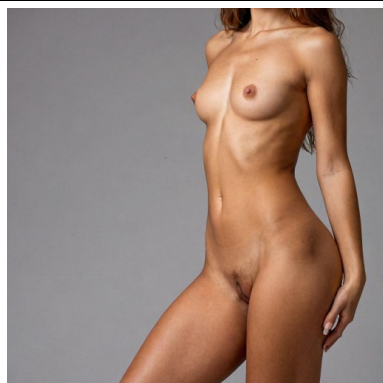
russet



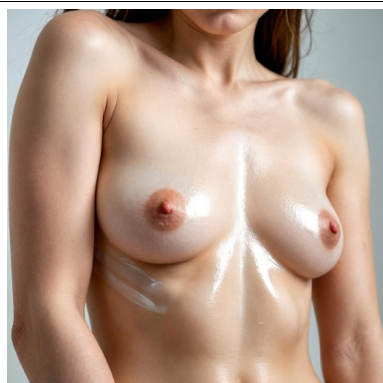
tan



tawny



**translucent
white**



umber



very dark brown



very light beige



very pale

